



NO.25-120, Shiyizhi, Longder Village, Shueishang
Township, Chiayi County, 60859, Taiwan
TEL: 886-5-2603816, 886-5-2600820
FAX: 886-5-2603817, Order FAX: 886-5-2601595
E-mail: service @ hcb-autotools.com.tw
hcb@hcb-autotools.com.tw
www.hcb-autotools.com



H.C.B-A1383

ELECTRICAL BRAKE LINING SHOE LOADER

PAT.409117



IMPORTANT:

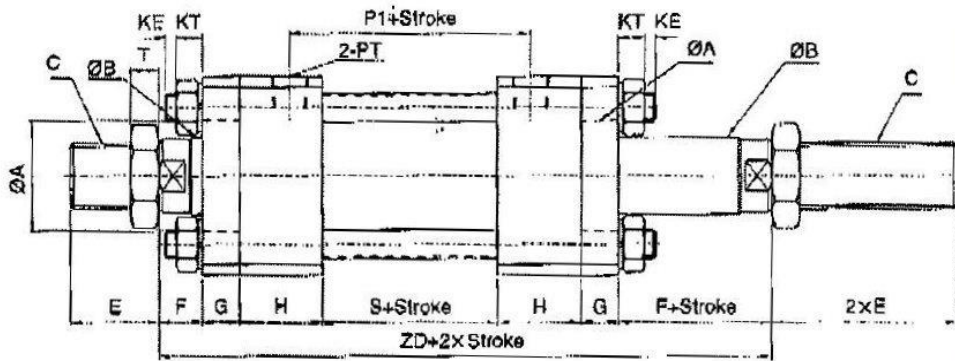
READ THESE INSTRUCTION CAREFULLY. NOTE THE SAFE OEPRATIONAL REQUIREMENTS, WARNINGS AND CAUTIONS. USE THE TOOL CORRECTLY AND WITH CARE FOR THE PURPOSE FOR WHICH IT IS INTENDED. FAILURE TO DO SO MAY CAUSE DAMAGE AND/ OR PERSONAL INJURY AND WILL INVALIDATE THE WARRANTY. PLEASE KEEP INSTRUCTIONS FOR FUTURE USE.

1. Structure of the machine



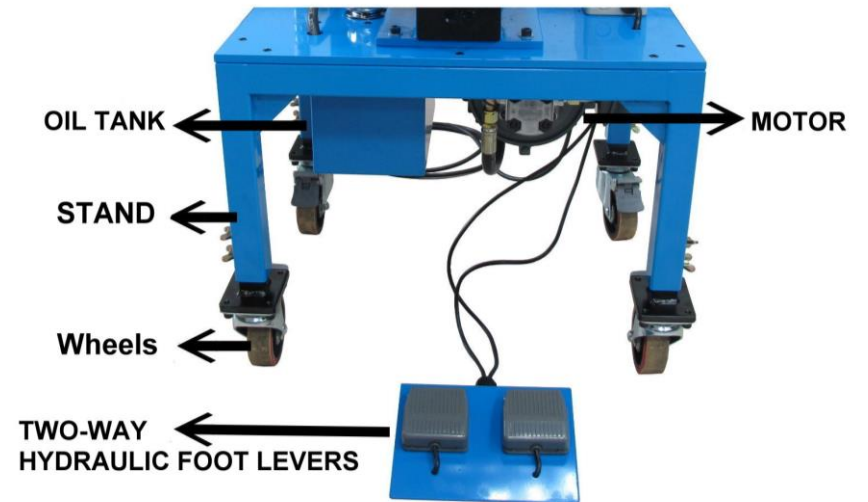
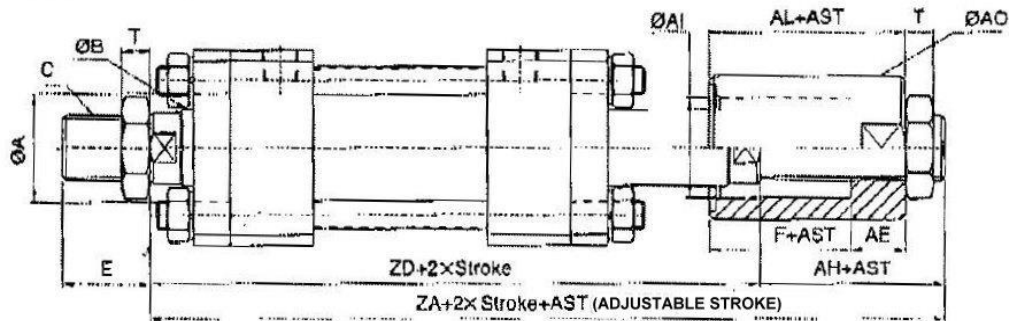
7-2. Hydraulic information

HO+D TYPE



Machine hydraulics

HOD+AST TYPE

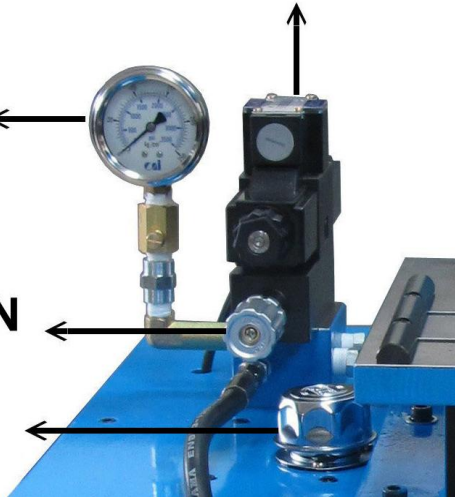


PRESSURE REGULATOR

PRESSURE GAUGE

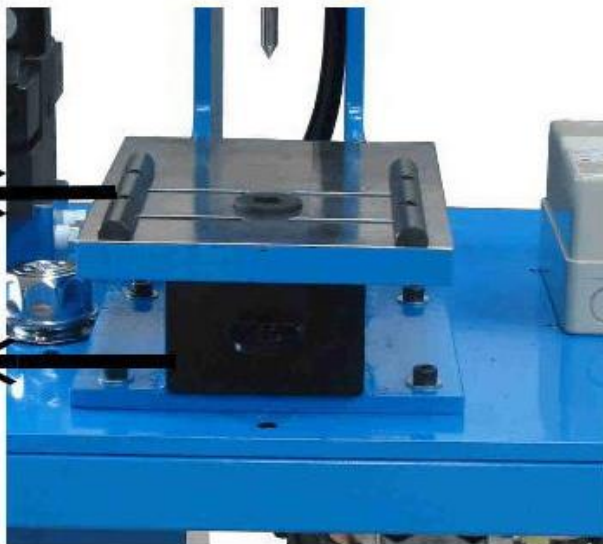
REGULATOR BUTTON

OIL TANK LID



ADJUSTABLE
FIXTURE

OLD RIVETS
COLLECTION BOX



7-2. Hydraulic information

Hydraulic parts list :

Hydraulic units :

- (1) Motor single-phase
- (2) Hydraulic pump
- (3) Solenoid Valve
- (4) Laminated pressure valve
- (5) Manifold block
- (6) Oil tank
- (7) Pressure gauge
- (8) Stopper
- (9) Hydraulic accessories
- (10) Hydraulic cylinder
- (11) Hydraulic hose

Machine hydraulics

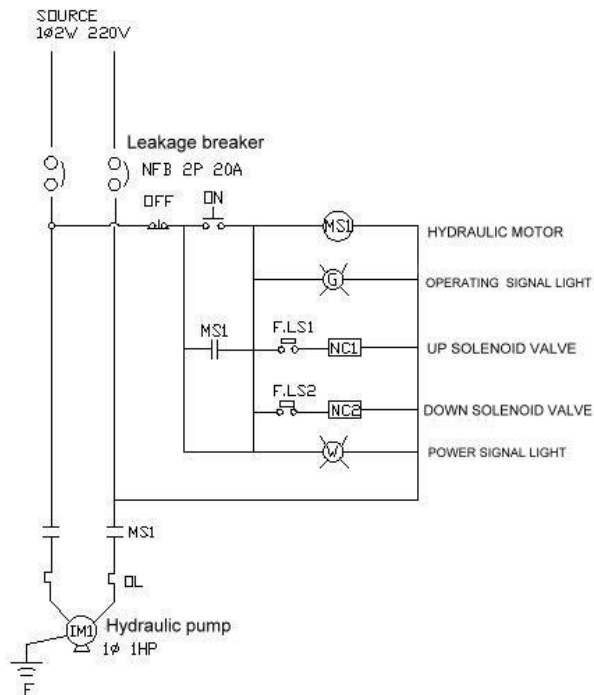
SIZE	HOB-HOD TYPE																ADJUSTABLE STROKE TYPE											
	φ A	φ B	C	□D	□DE	E	F	G	H	N	P	P1	PM	PT	K	KE	KT	S	T	W	Z	ZD	ZA	AH	AE	φ AI	φ AO	AL
φ 40	40	25	M22×P1.5	65	45	40	20	17	33	28	76	74	30	3/8"	M10×P1.25	10	10.5	50	13	32	148	190	225	35	20	30	45	40
φ 50	45	30	M26×P1.5	80	56	40	20	17	38	30	85	85	35	3/8"	M12×P1.5	10	13	55	13	35	160	205	245	40	25	37	56	45
φ 63	50	35	M30×P1.5	90	62	45	20	17	38	30	85	85	35	3/8"	M14×P1.5	10	14.5	55	13	41	160	205	245	40	25	42	60	45
φ 80	55	40	M30×P1.5	110	80	45	20	20	38	35	107	105	50	1/2"	M16×P1.5	10	17	75	13	41	188	231	276	45	30	47	70	50
φ 100	65	50	M40×P2.0	131	95	55	25	20	41	37	123.5	120	60	1/2"	M18×P1.5	10	19.5	90	15	55	213	262	307	45	30	57	90	55
φ 125	80	60	M50×P2.0	162	122	70	35	30	57	47	143	140	70	3/4"	M22×P1.5	10	23.5	100	15	65	269	344	394	50	35	68	100	70
φ 150	100	80	M70×P2.0	195	144	80	35	30	60	50	135	130	60	3/4"	1"×UNC	5	30	90	20	90	265	340	400	60	40	90	120	75
φ 180	120	100	M90×P2.0	235	175	100	35	40	65	55	172	170	70	1"	1.1/4"×8UNC	10	35	120	20	110	315	400	465	65	40	110	150	75
φ 200	120	100	M90×P2.0	262	193	100	40	40	65	60	175	170	70	1"	1.1/4"×8UNC	10	35	120	20	110	325	410	475	65	40	110	150	80

7-1. Electric Information

Electric parts list:

- (1) Solenoid Valve
- (2) Power Signal light
- (3) Turn-on Signal light
- (4) Emergency power cut-off button
- (5) Connection terminal
- (6) Fuse
- (7) Over-load protection
- (8) Power switch
- (9) leakage breaker
- (10) Switch of foot levers

Machine electric circuit



Parts No.	Description
A1383-7	2.5mm 6 POINTS T-SHAPE WRENCH
A1383-8	5mm 6 POINTS WRENCH
A1383-9	RIVET REMOVER FOR BEAKE LINING SHOE LOADER (FOR FUSO ONLY) (Ø 6mm)
A1383-10	4mm RIVET REMOVER FOR BEAKE LINING SHOE LOADER
A1383-11	6mm RIVET REMOVER FOR BEAKE LINING SHOE LOADER
A1383-12	8mm RIVET REMOVER FOR BEAKE LINING SHOE LOADER
A1383-13	7mm ROLL HEAD RIVETER FOR BRAKE LINING SHOE LOADER
A1383-14	9mm ROLL HEAD RIVETER FOR BRAKE LINING SHOE LOADER
A1383-15	11mm ROLL HEAD RIVETER FOR BRAKE LINING SHOE LOADER
A1383-16	ROLL HEAD RIVETER FOR BRAKE LINING SHOE LOADER (FOR FUSO ONLY)
A1383-P9	SLEEVE φ35×13L (ID : φ16)
A1383-P10	SLEEVE φ35×13L (ID : φ13)
A1383-P11	SLEEVE φ35×13L (ID : φ9)
A1383-P12	AXIS φ35×35.5L
A1383-P13	AXIS φ35×35L

2. Note:

01. Be careful of the HANDS position of operator to prevent hurting.
02. Keep a safe distance between MACHINE and HEAD of operator.
03. Pay attention to safe precautions to reduce any harm or hazard of electric shock.
04. Keep DRY to the environment around the machine to avoid electric leakage.
05. Turn off the power or remove the battery cable before maintain or adjust electric circuit and parts.
06. Cables must be wrapping tightly. Electrical Insulation inspects regularly for safety usage of electricity.
07. All the electrical equipment shell must be grounded or conducted by the electricity regulation.
08. Use proper tools and follow the steps to maintain the machine.
09. There are instructions sticks on the machine for clarity. Please do not adjust them randomly.
10. Keep the units clean to avoid oil or damp.
11. Please read these instructions carefully. Note the safe operational requirements, warnings and cautions.

6. MAINTENANCE

1. The purpose for preventive maintenance is to bring out the maximum effectiveness of the machine and bring down the minimum chance of damage. The preventive maintenance contains two parts: General maintenance and Regular maintenance such as clean 、 check 、 lubrication and adjustment. It required changing parts if necessary. In other word, general maintenance is check while using the brake lining shoe loader. Regular maintenance is to maintain the limited-life parts after a period time of usage.
2. The wires should be in good Electrical Insulation; otherwise, it might cost short-circuit.
3. The connection of power and wire remain well-connected. If it is corrupt, you can clean it by warm or soda water.
4. The oil tank lid should be well-closed to prevent the hydraulic oil expose in the air. It is because the hydraulic oil will absorb the water and dust from the air.
5. Refill the hydraulic oil to eighth full after using. In this case, it can prevent condensation. Do not refill the oil fully, but leave space for the oil as the feature of oil- thermal expansion and contraction.
6. Release the water and precipitant from the oil tank at least once a month. Moreover, clean the oil tank once every three months.
7. Clean the Panel part by Cleaning Naphtha.
8. Clean the Paint part by Cleaning Naphtha and Rosin.
9. Clean Electroplating and Surface blackening part by rust preventive oil to prevent rust.
10. Please add lubricating oil to the axis.
11. If any special case of problem can't be judge or fix, please contact with the factory technician service.

INSTALLATION-

14. Adjust to proper pressure regarding to the sizes of new shoes and linings.
15. Select a proper size of roll head riveter to fit the shoes and linings.
16. Fix the roll head riveter by six point T-shape wrench.
17. Choose a proper size of axis suitable for the shoes and linings.
18. Put the new shoe or lining ready to install on the fixture.
19. Adjust the fixture to good position according to the size of new shoe or lining.
20. Fix the fixture by 6 point wrench.
21. Operate the machine by two-way hydraulic foot lever.
22. To combine the new shoe and lining by roll head riveter.
23. If the electronic lining shoe loader is under abnormal condition, press down the emergency cut-off button to stop working.
24. Please follow the instruction thoroughly. If any special case of problem, please contact with the factory technician.

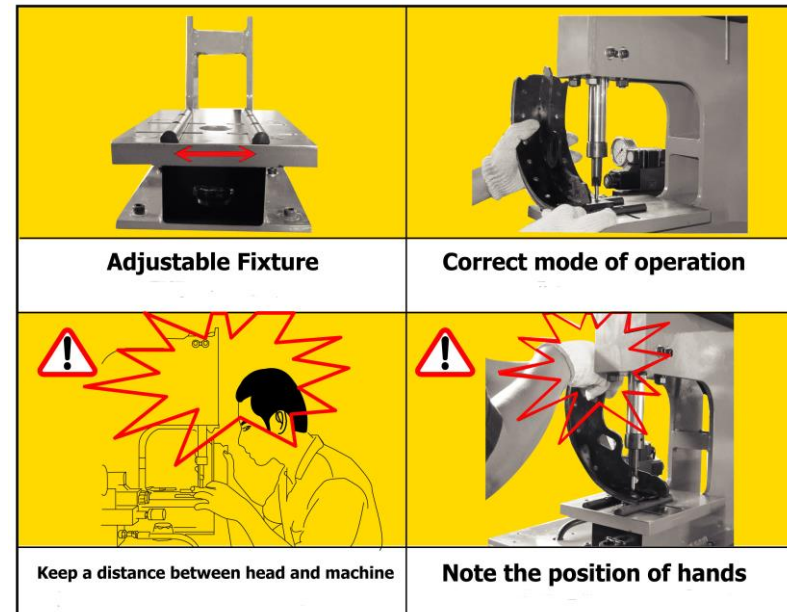
3. Descriptions of warning sign



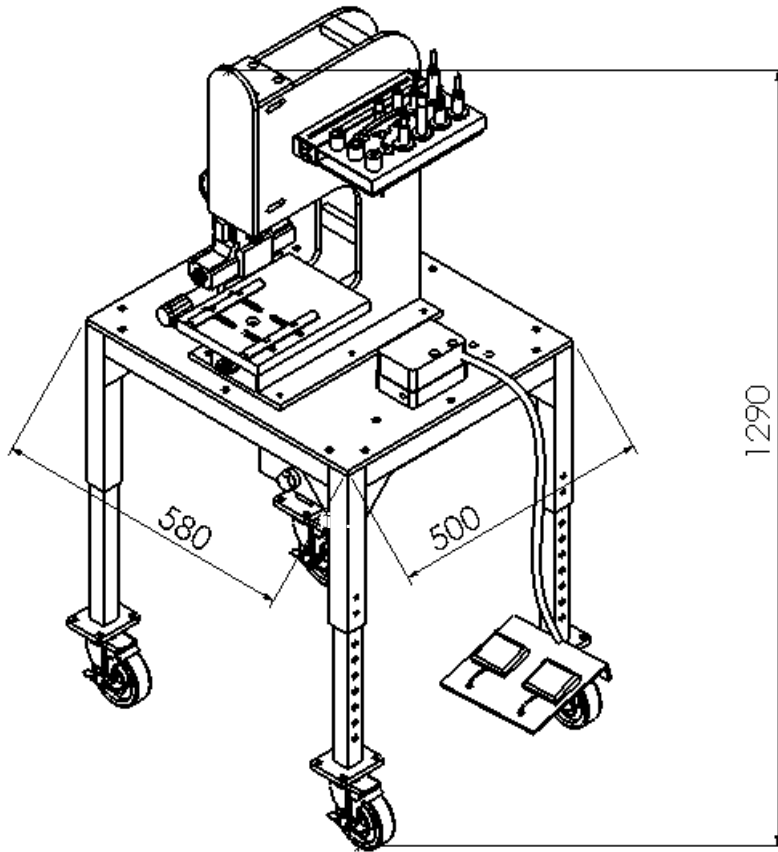
Danger warning !



Power Supply warning !



4. Specification of the machine



Max. Cylinder Capacity	2.7 TON
Max. pressure	140 kg/cm ²
The range of Height	530~690 mm
Voltage	220VAC/1 HP /60Hz
Stroke	100 mm
Motor Size	0.75 KW
Machine dimensions (L*W*H)	580×500×1290 mm
New Weight	150kgs

5. STEPS:

Removal-

1. Switch the cut-off device button to “ON” position.
2. Turn on the power.
3. Adjust to proper pressure regarding to different sizes of shoes and linings.
4. Select a proper size of rivet remover to fit the shoes and linings.
5. Fix the rivet remover by six point T-shape wrench.
6. Choose a proper size of sleeve for the shoes and linings.
7. Put the shoe or lining needed to remove on the fixture.
8. Adjust the fixture to good position according to the size of shoe or lining.
9. Fix the fixture by 6 point wrench.
10. Operate the machine by two-way hydraulic foot lever.
11. Remove the old rivets by rivet remover to separate the shoe and lining.
12. Take away the separated old lining and shoe from the fixture.
13. Take out new shoes or lining ready to replace.